



Bred for the long haul



Proven top-end
yield potential



Excellent leaf and
stripe rust tolerance



Very good protein
with broad adaptation



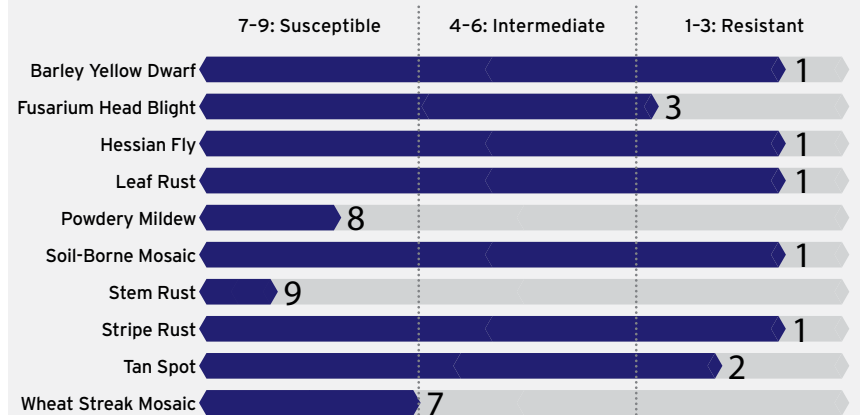
Superior
straw strength

HARD RED WINTER WHEAT LCS Chrome

ADAPTATION



DISEASE RESISTANCE



All available public and private data used in compiling scores

END-USE QUALITY

Overall Quality	Baking Quality	Dough Properties	Milling Quality
Acceptable	Acceptable	Less Desirable	Acceptable

Data obtained from LCS Quality Laboratory

AGRONOMIC FEATURES

	LCS Chrome	Byrd	WB Grainfield	SY Monument
Acid Soil Tolerance	Tolerant	Mod. Tolerant	Mod. Tolerant	Tolerant
Coleoptile Length	Medium	Medium-Long	Medium-Short	Medium
Drought Tolerance	Very Good	Excellent	Very Good	Very Good
Fall Grazing Potential	Average	Average	Very Good	Good
Fall Ground Cover	Good	Good	Good	Good
First Hollow Stem	Later Than Most	Intermediate	Intermediate	Later Than Most
Height	Medium-Tall	Medium	Medium-Tall	Medium-Tall
Maturity	Medium-Late	Medium	Medium-Late	Medium-Late
Seed Size	Medium	Small	Medium	Medium
Tolerance to Shattering	Good	Good	Very Good	Very Good
Straw Strength	Excellent	Good	Good	Average
Test Weight	Very Good	Average	Average	Good
Tillering Ability	High	Very High	High	Very High
Winter-Hardiness	Very Good	Good	Very Good	Very Good
Yield Potential	Excellent	Excellent	Very Good	Excellent

All available public and private data used in compiling scores



Unauthorized seed multiplication prohibited by law.
U.S. Plant Variety Protection Number has been applied for.



Drew Hendricker } Central Plains Sales Manager



970.231.8875



drew.hendricker@limagrains.com



LimagrainsCerealSeeds.com