



# Stinging grassy weed control

- Trial-topping yield potential
- Improved straw strength
- Excellent stripe rust resistance
- Medium plant height

## SOFT WHITE WINTER WHEAT LCS Scorpion AX

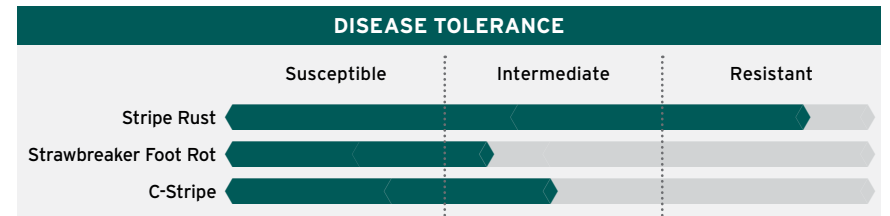
ADAPTATION



YIELD			
	BU/AC	LCS Scorpion AX	Trial Avg. MEAN
3-Year Avg OSU Low Rain	58.5		102% of mean
3-Year Avg OSU Int. Rain	103.3		104% of mean
3-Year Avg OSU High Rain	125		106% of mean
2025 WSU <12"	57		98% of mean
2025 WSU >20"	121.7		104% of mean

AGRONOMIC FEATURES					
	LCS Scorpion AX	LCS Hydra AX	Nova AX	Piranha CL+	LCS Hulk
Test Weight	Average	Abv. Avg	Blw. Avg	Blw. Avg	Abv. Avg
Protein	Average	Low	Average	Average	High
Winter-Hardiness	Moderate	Moderate	Tolerant	Tolerant	Tolerant
Heading (Julian)	144	144	147	148	147
Plant Height	Medium	Medium	Med-Tall	Medium	Medium
Straw Strength	Excellent	Average	Average	Average	Excellent

All available public and private data used in compiling scores



All available public and private data used in compiling scores

END-USE QUALITY			
Overall Quality	Baking Quality	Flour Protein	Milling Quality
Acceptable	Acceptable	Acceptable	Desirable

Data obtained from LCS Quality Laboratory

