



# Eclipse the competition

**Excels**  
under irrigation

**Good straw**  
**strength**

**First HRWW**  
with PNW pedigree

**Medium height**  
and early  
heading date

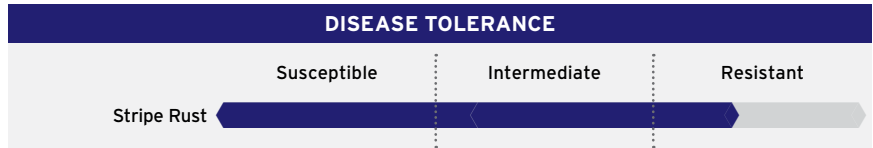
## HARD RED WINTER WHEAT LCS Eclipse AX



YIELD			
	BU/AC	LCS Eclipse AX	Trial Avg. MEAN
2023 WSU < 12"	51		116% of mean
	44		
2023 WSU 12-16"	75		99% of mean
	76		
2023 WSU 16-20"	92		102% of mean
	90		
2023 WSU > 20"	108		103% of mean
	105		
2023 WSU Irrigated	141		113% of mean
	125		

AGRONOMIC FEATURES			
	LCS Eclipse AX	LCS Helix AX	LCS Jet
Test Weight	59.3	63.9	59.8
Protein %	11.6	11.7	12.5
Heading (Julian)	150	144	149
Plant Height (in.)	37	36	32
Coleoptile Length (in.)	3.5	3.9	4.3
Straw Strength	Good	Average	Excellent

All available public and private data used in compiling scores



All available public and private data used in compiling scores

END-USE QUALITY			
Overall Quality	Baking Quality	Flour Protein	Milling Quality
Desirable	Desirable	Acceptable	Acceptable

Data obtained from LCS Quality Laboratory



Bailey Jenks, PNW Regional Commercial Manager

509.520.5661 | Bailey.Jenks@Limagrain.com | LimagrainCerealSeeds.com/PNW

FVP Unauthorized seed multiplication prohibited by law. U.S. Plant Variety Protection Number has been granted. Limited-use license agreement.