



## Reigning over wheat fields with straw strength and yield



**Extremely strong straw**



**Striking wheat with large heads**



**Excellent stripe rust tolerance**



**Excellent end-use quality**

## SOFT WHITE WINTER WHEAT VI Bulldog

ADAPTATION



### YIELD

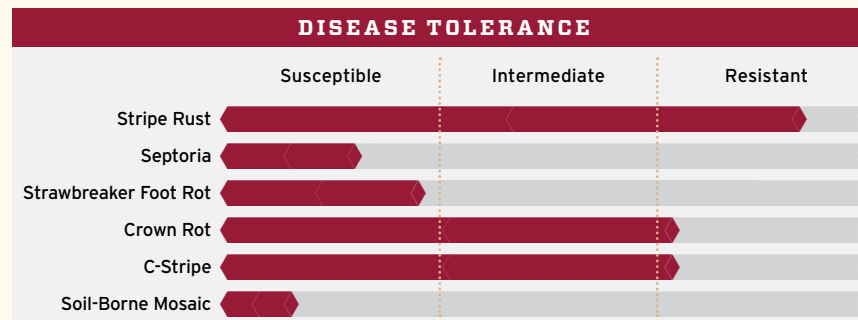
	BU/AC	VI Bulldog	Trial Avg.	MEAN
1-Year OSU Low Rain	68			105% of mean
	65			
3-Year UI North	119			104% of mean
	114			
2-Year WSU > 20"	116			104% of mean
	112			
3-Year WSU Irrigated	107			103% of mean
	104			
3-Year WSU > 20"	116			103% of mean
	113			
3-Year WSU 16-20"	112			102% of mean
	110			
2-Year UI North	123			101% of mean
	122			
1-Year WSU > 20"	101			101% of mean
	100			

### AGRONOMIC FEATURES

	VI Bulldog	Rosalyn	SY Ovation	Stephens	Xerpha
Test Weight	62.2	59.6	61.1	60.2	61.0
Protein %	9.8	9.0	9.1	9.4	9.7
Winter-Hardiness	Good	Good	Good	Below Avg.	Very Good
Heading (Julian)	156	160	158	155	159
Plant Height (in.)	34	34	35	34	35
Straw Strength	Excellent	Very Good	Very Good	Very Good	Good
Head Type	Awnless	Awnless	Awned	Awned	Awned

All available public and private data used in compiling scores

### DISEASE TOLERANCE



All available public and private data used in compiling scores

### END-USE QUALITY

Overall Quality	Baking Quality	Flour Protein	Milling Quality
Most Desirable	Most Desirable	Desirable	Most Desirable

Data obtained from the LCS and U of I Quality Laboratories

Bailey Jenks, PNW Regional Commercial Manager

509.520.5661 | Bailey.Jenks@Limagrains.com | VarsityIdaho.com



Unauthorized seed multiplication prohibited by law. U.S. Plant Variety Protection Number has been granted.