



When you want more



Two-gene
Clearfield Plus



Improved
stripe rust tolerance



Attractive
plant type



Excellent
performance
in intermediate to high
rainfall zones

SOFT WHITE WINTER WHEAT

VI Encore CL+

ADAPTATION



YIELD

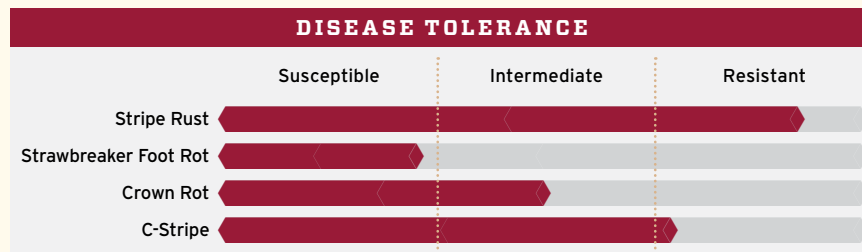
	BU/AC	VI Encore CL+	Trial Avg.	MEAN
2-Year WSU < 12"	45		41	110% of mean
3-Year WSU 12-16"	78		77	101% of mean
2-Year WSU 12-16"	87		87	100% of mean
3-Year OSU Int. Rain	100		99	101% of mean
3-Year WSU > 20"	103		101	102% of mean
2023 WSU Irrigated	136		126	108% of mean

AGRONOMIC FEATURES

	VI Encore CL+	VI Presto CL+	UI Magic CL+	Piranha CL+
Test Weight	60.2	61.2	59.7	58.6
Protein (%)	10.5	10.8	10.3	10.5
Winter-Hardiness	Below Avg.	Good	Below Avg.	Good
Heading (Julian)	155	154	153	154
Plant Height (in.)	34	37	32	35
Coleoptile Length (in.)	4.4	4.0	4.1	3.4
Straw Strength	Excellent	Excellent	Excellent	Average

All available public and private data used in compiling scores

DISEASE TOLERANCE



All available public and private data used in compiling scores

END-USE QUALITY

Overall Quality	Baking Quality	Flour Protein	Milling Quality
Desirable	Desirable	Acceptable	Desirable

Data obtained from the LCS and U of I Quality Laboratories



Bailey Jenks, PNW Regional Commercial Manager

509.520.5661 | Bailey.Jenks@Limagrains.com | VarsityIdaho.com



Unauthorized seed multiplication prohibited by law.
U.S. Plant Variety Protection Number has been applied for.